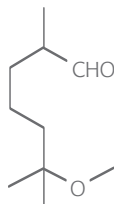


Methoxymelonal

CAS No.: 62439-41-2 EINECS No.: 263-545-5

Methoxymelonal



6-Methoxy-2,6-dimethylheptan-1-al

$C_{10}H_{20}O_2 = 172\text{g/mol}$

Olfactory Description

A light floral, slightly fruity note with watery citrus character.

Applications

It may be used to add a fresh florality to a variety of odour types. It combines well with green, citrus and floral bouquets, especially in shampoos and other toiletries.

Product Specification

GC analysis	Methoxydimethylheptanal 95% minimum
Visual description	Clear, almost colourless liquid
Density at 20°C (gm/ml)	0.895 - 0.897
Refractive index (NaD 20°C)	1.432 - 1.435
Flash point (closed cup)	88°C/190°F
Acid value (mgKOH/g)	2 maximum
Commodity code	32174
HS number	291249
TSCA number	TSCA Registered
Country of origin	UK

Substantivity

48 hours on a smelling strip

Safety and Toxicology

For further information please see the relevant Safety Data Sheet at www.innospecinc.com

Packaging and Storage

Standard pack size – 185kg/20kg
12 months (in unopened containers)



For further information, please email your region:

america-ac@innospecinc.com, aspac-ac@innospecinc.com, emea-ac@innospecinc.com

www.innospecinc.com

Issue No. 3/2008

The facts stated and the recommendations made are based on our own research and/or the research of others, and are believed to be accurate. No guarantee of their accuracy is made, however, and unless otherwise expressly provided by law or in written contract, the materials are sold without warranties, expressed or implied, in particular without guarantee as to suitability for particular purpose. Innospec assumes no responsibility for injury or damage to users or third parties. Recipient agrees to assume all risk and liability whether used singly or in combination with other materials.